

EXAMPLES OF SOCIAL MEDIA ACTIVITY SURROUNDING THE SEPTEMBER 18, 2018 RELEASE OF TRIP'S *Wisconsin Transportation by the Numbers: Meeting the State's Need for Safe, Smooth and Efficient Mobility*



Tweets **72.7K**   Following **351**   Followers **8,697**   Likes **138**   Lists **4**

# LEADER-TELEGRAM

TWITTER.COM/LEADERTELEGRAM  
LEADER-TELEGRAM.COM  
FACEBOOK.COM/LEADER-TELEGRAM

THURSDAY • SEPTEMBER 20, 2018 \$1.00

YOUR LEADING SOURCE FOR LOCAL NEWS IN EAU CLAIRE AND THE COPPERNA VALLEY SINCE 1891

Volume 18 • Number 312 • 4 Sections • 20 Pages

High 74  
Low 54  
Today's forecast details/10

L-T INSIDE

DEALING WITH PAIN



As he prepares to face the Redskins on Sunday, the Packers' Aaron Rodgers remains a "little sore" following the 25-29 tie against the Vikings when he played with a brace to protect his injured left knee. Page 1D

FREE AT AREA NEWSSTANDS



INDOMITABLE  
Backdoor September issue

ALL THE NEWS...

ALL THE TIME  
Digital edition, full online access included with all 7-day print subscriptions

## SUBURBAN MADISON SHOOTING

# Co-workers targeted

Heavily armed man seriously wounds 3, grazes another before being killed by police

By TOM HARRISON  
AND SCOTT BARR

Associated Press

MIDDLETON — A heavily armed man opened fire on his co-workers at a Wisconsin software company Wednesday, seriously wounding three people before being fatally shot by police as employees ran from the building or hid inside, according to investigators. Middleton police Chief

Chuck Foulke said officers shot the man within eight minutes of receiving calls about an active shooter at WTS Paradigm. Foulke said the man was armed with a semi-automatic pistol and extra ammunition, and he fired at officers before he was shot.

Foulke said three people were seriously wounded during the attack, while a fourth person was grazed by a bullet.

"I think a lot less people

were injured or killed because police officers went in and neutralized the shooter," Foulke said.

The police chief said the motivation behind the attack was unclear, and investigators didn't yet know whether the gunman targeted his victims. He didn't release the suspect's name but said he was an employee of WTS Paradigm and lived in

See SHOOTING Page 2A



Associated Press

A woman is escorted from the scene of a shooting at a software company Wednesday in Middleton. Police say they shot and killed the gunman within eight minutes of receiving calls about an active shooter.

# The high cost of poor roads



## Senator looks to kill upcoming CWD rules

Walker's commitment to regulations that start Oct. 1 questioned by Wachs of Eau Claire

By TOM HARRISON

Associated Press





Tweets 48.2K   Following 11.4K   Followers 32.5K   Likes 1,645



**The Capital Times** @CapTimes · 1h

National report: Half of Wisconsin's major roads are in poor or mediocre condition  
[dlvr.it/QkZ4Ff](https://dlvr.it/QkZ4Ff)



🗨️ ↻ 4 ❤️ ✉️



Tweets	Following	Followers	Likes	Lists
<b>54.2K</b>	<b>1,913</b>	<b>3,210</b>	<b>14.7K</b>	<b>8</b>

[League of Wis Munis](#) **Verified account**



**League of Wis Munis**  @LeagueWIMunis · 45s

Retweet please! @TRIP\_Inc Report details "HIDDEN COSTS OF DEFICIENT ROADS Driving on Wisconsin roads that are deteriorated, congested & lack some desirable safety features costs Wis drivers a total of \$6.8 billion each year." It's definitely time to #JustFixItWI @TDAWisconsin

**TDA Wisconsin** @TDAWisconsin

RT @TRIP\_Inc Half of major locally and state-maintained roads and highways in Wisconsin are in poor or mediocre condition @TRIP\_Inc #WIInfrastructure ow.ly/dvRq30IRfne @WisCounties @LeagueWIMunis #JustFixItWI








**ARTBA**  
@ARTBA

Following

The latest @TRIP\_Inc report shows how important infrastructure is to Wisconsin's economy! #InfrastructureMatters It's time to #FixTheTrustFund



**TRIP @TRIP\_Inc**  
The efficiency of Wisconsin's transportation system, particularly its highways, is critical to the state's economy. @TRIP\_Inc report says \$580 billion in goods are shipped to and from sites in Wisconsin each year, mostly by truck #WIInfrastructure ow.ly/dvRq30IRfne

9:15 AM - 18 Sep 2018

1 Retweet 5 Likes



[FasterBetterSafer](#) liked a reply you were mentioned in

[FasterBetterSafer](#) Retweeted your Tweet

### TRIP @TRIP\_Inc

Extra vehicle costs, crashes, congestion cost Madison area drivers \$2,139 a year according to new @TRIP\_Inc report #WIInfrastructure <http://ow.ly/TVzO30IRgij>



[FasterBetterSafer](#) liked your Tweet

34s34 seconds ago **TRIP @TRIP\_Inc**

Extra vehicle costs, crashes, congestion cost Madison area drivers \$2,139 a year according to new @TRIP\_Inc report #WIInfrastructure <http://ow.ly/TVzO30IRgij>

[FasterBetterSafer](#) Retweeted a Tweet you are mentioned in

**ARTBA @ARTBA**



[FasterBetterSafer](#) and [Ben Taylor](#) liked a Tweet you were mentioned in

2m2 minutes ago

**ARTBA @ARTBA**

The latest [@TRIP\\_Inc](#) report shows how important infrastructure is to Wisconsin's economy! **#InfrastructureMatters** It's time to **#FixTheTrustFund**  
[https://twitter.com/TRIP\\_Inc/status/1042038795888148481](https://twitter.com/TRIP_Inc/status/1042038795888148481) ...



[TDA Wisconsin @TDAWisconsin](#) 14m  
minutes ago

[TDA Wisconsin @TDAWisconsin](#) 4m4

RT [@rockproducts](#) TRIP: Wisconsin Roads, Bridges in Dire Need of Repair  
<http://ow.ly/q17Q30lRT5c> [@TRIP\\_Inc](#) **#JustFixItWI**



[Pete Grass](#) liked your Tweet  
6h6 hours ago

**TRIP @TRIP\_Inc**

Report: condition of Wisconsin roads costing drivers money <https://www.wsaw.com/content/news/Condition-of-Wisconsin-roads-costing-drivers-money-493630931.html> ... [@TRIP\\_Inc](#) **#WIInfrastructure**



[John D. Boyd](#) and [ASCE Gov't Relations](#) Retweeted your Tweet  
7h7 hours ago

**TRIP @TRIP\_Inc**

Americans' commutes keep getting longer, according to survey data  
[https://www.sfgate.com/news/article/Americans-commutes-keep-getting-longer-13236271.php?utm\\_campaign=twitter-desktop&utm\\_source=CMS%20Sharing%20Button&utm\\_medium=social](https://www.sfgate.com/news/article/Americans-commutes-keep-getting-longer-13236271.php?utm_campaign=twitter-desktop&utm_source=CMS%20Sharing%20Button&utm_medium=social) ... via [@SFGate](#)



[ASCE Gov't Relations](#), [Brian Pallasch](#) and [Ben Taylor](#) liked your Tweet  
7h7 hours ago

**TRIP @TRIP\_Inc**

Americans' commutes keep getting longer, according to survey data  
[https://www.sfgate.com/news/article/Americans-commutes-keep-getting-longer-](https://www.sfgate.com/news/article/Americans-commutes-keep-getting-longer-13236271.php?utm_campaign=twitter-desktop&utm_source=CMS%20Sharing%20Button&utm_medium=social)

13236271.php?utm\_campaign=twitter-desktop&utm\_source=CMS%20Sharing%20Button&utm\_medium=social ... via @SFGate



[StephanieChristensen](#) Retweeted a Tweet you are mentioned in 8h8 hours ago

**TDA Wisconsin @TDAWisconsin**

RT @TRIP\_Inc National report: Half of Wisconsin's major roads are in poor or mediocre condition



<http://ow.ly/VOpU30IRUg8> via @CapTimes #JustFixItWI

[WI Assn News](#) Retweeted a Tweet you are mentioned in 10h10 hours ago

**TDA Wisconsin @TDAWisconsin**

RT @TRIP\_Inc Half of major locally and state-maintained roads and highways in Wisconsin are in poor or mediocre condition @TRIP\_Inc #WIInfrastructure <http://ow.ly/dvRq30IRfne> @WisCounties



@LeagueWIMunis #JustFixItWI

[Jerry Deschane](#) and [Nick Jarmusz](#)



Retweeted a Tweet you are mentioned in

18h18 hours ago



**TDA Wisconsin @TDAWisconsin**

RT @TRIP\_Inc report: Driving on WI roads that are deteriorated, congested, and that lack some desirable safety features costs WI drivers a total of \$6.8 billion each year #WIInfrastructure <http://ow.ly/dvRq30IRfne> @WisCounties @LeagueWIMunis #JustFixItWI



• [TDA Wisconsin @TDAWisconsin](#) 20h20 hours ago

RT @TRIP\_Inc Green Bay-Appleton-Oshkosh area drivers pay \$1,456 a year in extra vehicle operating costs, congestion, safety @TRIP\_Inc #WIInfrastructure <http://ow.ly/iNHQ30IRgil> #JustFixItWI @FoxCitiesChmbr @OshkoshChamber

[TDA Wisconsin @TDAWisconsin](#) 22h22 hours ago



Milwaukee drivers pay \$2,321 a year - extra vehicle costs, crashes and congestion - as a result of poor roads. @TRIP\_Inc #WIInfrastructure <http://ow.ly/1sQd30IRgkj> #JustFixItWI @MMAC Chamber

[TDA Wisconsin @TDAWisconsin](#) 22h22 hours ago



RT @TRIP\_Inc Eau Claire area drivers paying \$1,219 extra a year because of road conditions, traffic congestion and crashes @TRIP\_Inc #WIInfrastructure <http://ow.ly/52fB30IRgh0> #JustFixItWI @ecareachamber



[Nick Jarmusz](#) liked a Tweet you were mentioned in

23h23 hours ago



**TDA Wisconsin @TDAWisconsin**

RT [@TRIP\\_Inc](#) report: Driving on WI roads that are deteriorated, congested, and that lack some desirable safety features costs WI drivers a total of \$6.8 billion each year [#WIInfrastructure](#) <http://ow.ly/dvRq30lRfne> [@WisCounties](#) [@LeagueWIMunis](#)



[#JustFixItWI](#)

[Ben Taylor](#) liked a Tweet you were mentioned in

23h23 hours ago

**ARTBA @ARTBA**

The latest [@TRIP\\_Inc](#) report shows how important infrastructure is to Wisconsin's economy! [#InfrastructureMatters](#) It's time to [#FixTheTrustFund](#) [https://twitter.com/TRIP\\_Inc/status/1042038795888148481](https://twitter.com/TRIP_Inc/status/1042038795888148481) ...

[TDA Wisconsin @TDAWisconsin](#) 23h23 hours ago



RT [@TRIP\\_Inc](#) report: Driving on WI roads that are deteriorated, congested, and that lack some desirable safety features costs WI drivers a total of \$6.8 billion each year [#WIInfrastructure](#)

<http://ow.ly/dvRq30lRfne> [@WisCounties](#) [@LeagueWIMunis](#) [#JustFixItWI](#)

[TDA Wisconsin @TDAWisconsin](#) 24h24 hours ago



Yes, it's so important for [#economicdevelopment](#) to investment in our roads [@MadisonBiz](#) .

Deficient roads cost Madison area drivers \$2,139/yr in extra vehicle costs, crashes, and congestion cost according to new [@TRIP\\_Inc](#) report <http://ow.ly/TVzO30lRgjy> [#JustFixItWI](#)



[TDA Wisconsin @TDAWisconsin](#) Sep 18

MT [@Trip\\_Inc](#) “Until state elected officials...agree on long-term, sustainable transpo funding, WI will be unable to meet mounting needs on local roads & state highways,” D. Fedderly, Exec. Dir. WI County Hwy Assn commenting on [@TRIP\\_Inc](#) report

<http://ow.ly/hctU30lRgbr> [#JustFitItWI](#)

0 replies 1 retweet 2 likes

[TDA Wisconsin @TDAWisconsin Sep 18](#)



RT [@TRIP\\_Inc](#) Wisconsin report: One dollar of deferred maintenance on roads and bridges can cost \$4 to \$5 in needed future repairs [#WIIInfrastructure](#)

<http://ow.ly/dvRq30lRfne> [#JustFixItWI](#)

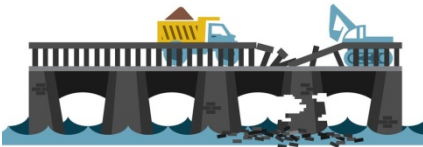


EVERY **\$1** OF DEFERRED MAINTENANCE ON ROADS AND BRIDGES

0 replies 0 retweets 0 likes



• • [TDA Wisconsin @TDAWisconsin Sep 18](#)



COSTS AN ADDITIONAL **\$4 - \$5** IN NEEDED FUTURE REPAIRS

Why it's so important to make investments like the Verona Road project@Verona\_Road1: Deficient roads cost Madison area drivers \$2,139 a year in extra vehicle costs, crashes and congestion according to new

[@TRIP\\_Inc](#) report <http://ow.ly/TVzO30lRgij> [#JustFixItWI](#) [#WIIInfrastructure](#)

SOURCE: NY LTAP CENTER



0 replies 0 retweets 0 likes



• • [League of Wis Munis Verified account @LeagueWIMunis Sep 18](#)

League of Wis Munis Retweeted TDA Wisconsin



Retweet please! [@TRIP\\_Inc](#) Report details "HIDDEN COSTS OF DEFICIENT ROADS Driving on Wisconsin roads that are deteriorated, congested & lack some desirable safety features costs Wis drivers a total of \$6.8 billion each year." It's definitely time to [#JustFixItWI](#) [@TDAWisconsin](#)

League of Wis Munis added,

[TDA Wisconsin @TDAWisconsin](#)

RT [@TRIP\\_Inc](#) Half of major locally and state-maintained roads and highways in Wisconsin are in poor or mediocre condition [@TRIP\\_Inc](#) [#WIIInfrastructure](#) <http://ow.ly/dvRq30lRfne> [@WisCounties](#)

[@LeagueWIMunis](#) [#JustFixItWI](#)

0 replies 1 retweet 2 likes



[League of Wis Munis](#) and [M Gormican Thompson](#) liked a Tweet you were mentioned in

Sep 18

[TDA Wisconsin @TDAWisconsin](#)



RT @TRIP\_Inc Half of major locally and state-maintained roads and highways in Wisconsin are in poor or mediocre condition @TRIP\_Inc #WIInfrastructure <http://ow.ly/dvRq30IRfne> @WisCounties @LeagueWIMunis #JustFixItWI



[TDA Wisconsin @TDAWisconsin](#) Sep 18

RT @TRIP\_Inc National report: Half of Wisconsin's major roads are in poor or mediocre condition <http://ow.ly/VOpU30IRUg8> via @CapTimes #JustFixItWI



[Maury Tobin](#) and [FasterBetterSafer](#) liked your Tweet

Sep 18

TRIP @TRIP\_Inc

Americans' commutes keep getting longer, according to survey data [https://www.sfgate.com/news/article/Americans-commutes-keep-getting-longer-13236271.php?utm\\_campaign=twitter-desktop&utm\\_source=CMS%20Sharing%20Button&utm\\_medium=social](https://www.sfgate.com/news/article/Americans-commutes-keep-getting-longer-13236271.php?utm_campaign=twitter-desktop&utm_source=CMS%20Sharing%20Button&utm_medium=social) ... via @SFGate



[TDA Wisconsin @TDAWisconsin](#) Sep 18

RT @TRIP\_Inc Half of major locally and state-maintained roads and highways in Wisconsin are in poor or mediocre condition @TRIP\_Inc #WIInfrastructure <http://ow.ly/dvRq30IRfne> @WisCounties @LeagueWIMunis #JustFixItWI



[Rock Products @rockproducts](#) Sep 18

TRIP: Wisconsin Roads, Bridges in Dire Need of Repair <http://ow.ly/q17Q30IRT5c> @TRIP\_Inc



[Gravelman](#) liked your Tweet

Sep 18

TRIP @TRIP\_Inc

Extra vehicle costs, crashes, congestion cost Madison area drivers \$2,139 a year according to new @TRIP\_Inc report #WIInfrastructure <http://ow.ly/TVzO30IRgjj>



1. •

[NSSGA](#) Retweeted your Tweet

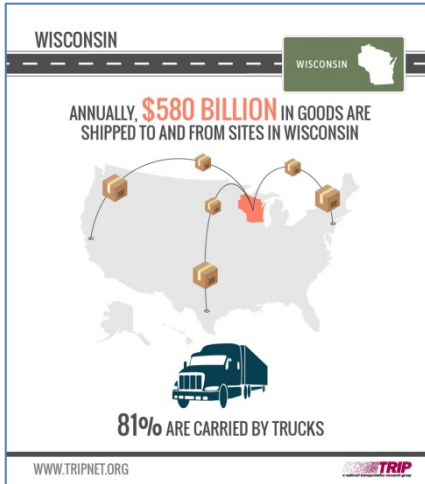
Sep 18



## TRIP @TRIP\_Inc

Extra vehicle costs, crashes, congestion cost Madison area drivers \$2,139 a year according to new @TRIP\_Inc report #WIInfrastructure <http://ow.ly/TVzO30IRgij>

[ARTBA @ARTBA Sep 18](#)



ARTBA Retweeted TRIP

The latest [@TRIP\\_Inc](#) report shows how important infrastructure is to Wisconsin's economy! [#InfrastructureMatters](#) It's time to [#FixTheTrustFund](#)

ARTBA added, [TRIP @TRIP\\_Inc](#) The efficiency of Wisconsin's transportation system, particularly its highways, is critical to the state's economy. [@TRIP\\_Inc](#) report says

\$580 billion in goods are shipped to and from sites in Wisconsin each year, mostly by truck ...



[Asphalt Contractor @AsphaltContractr Sep 18](#)

New [#TRIPReport](#) Indicates that over half of [#Wisconsin](#) roadways are in poor to mediocre condition: <https://buff.ly/2D7F86J> [@TRIP\\_Inc](#)