

What's the worst commute in Maryland?

A new report finds that Maryland roads have "the highest traffic volume in the nation" and scores the slowest slogs

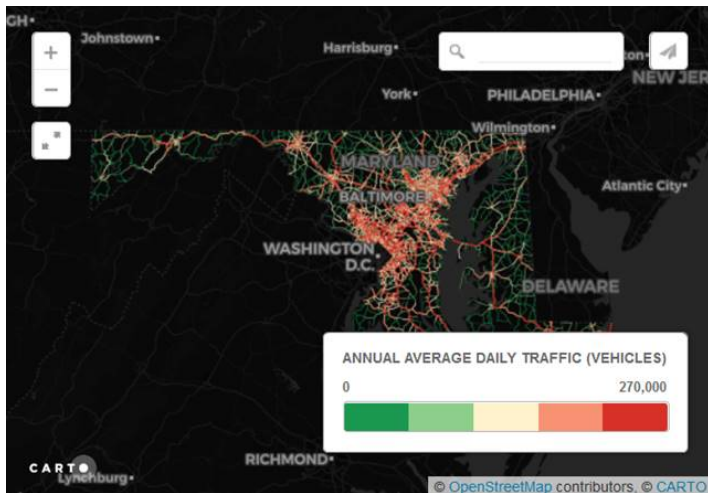
Author: Pete Muntean, Jordan Fischer

WASHINGTON — Maryland drivers, we feel your pain. A just-released report by a nonprofit transportation research firm says that Maryland drivers suffer through the second-longest commutes in the country, bested only by New York and beating California.

“The state’s roads carry the highest traffic volume in the nation,” said the report by TRIP, which underscored that population growth means that lawmakers must invest in long-term transportation projects. Maryland Governor Larry Hogan wants lawmakers to approve a \$17.8 billion dollar plan to relieve congestion by, in part, widening I-495, I-270, and I-70. “High levels of traffic congestion on Maryland’s major urban roads and highways reduce the reliability and efficiency of personal and commercial travel and hamper the state’s ability to support economic development and quality of life,” said the report.

The report, [which you can read in full here](#), ranks the worst commutes by the time of day and type of road.

Use our interactive map below to explore traffic congestion data from the Maryland Department of Transportation and see how your commute stands up:



TRIP says the outer loop of the Capital Beltway between Route 1 and Route 29 is the worst morning highway commute in our region. The Washington region’s worst evening highway commute, the report says, is on the I-270 Spur into I-495 followed closely by the Inner Loop of the Beltway between the Virginia state line and I-270.

The report says the worst arterial roads to drive on in the morning are US 29 between Route 650 and I-495. In the evening, Route 210 Southbound near Kerby Hill and Livingston Road to Palmer road is the worst.

Maryland Road Congestion

AM Commute

Rank	Route	Miles
1	1-495 outer Loop - US 1 to US 29	5
2	1-695 Outer Loop - I-795 to Edmondson Ave	7.5
3	1-695 Outer Loop - US 1 to MD 41	4.1
4	1-270 Local Southbound - Shady Grove Rd to Montrose Rd	4.6
5	1-95/1-495 Inner Loop - MD 5 to 1-295	5.7
6	US 50 Westbound - MD 704 to MD 295	6.6
7	1-695 Inner Loop - MD 140 to 1-83	5.4
8	1-270 Southbound - Montrose Rd to 1-270 Spur	3.1
9	MD 295 Southbound - MD 32 to MD 197	4.3
10	1-95 Southbound - MD 212 to 1-495	2.1
11	1-270 Southbound - MD 121 to Middlebrook Road	4.7
12	MD 295 Southbound MD 32 to AA/PG County Line	4.7
12	MD 295 Southbound AA/PG County Line to MD 193	4.9
14	1-95/1495 Outer Loop MD 4 to US 50	8
15	1-97 Southbound MD 3 to MD 178	6.4

PM Commute

Rank	Route	Miles
1	1-695 Inner Loop - MD 139 to MD 542	4.6
1	1-270 West Spur Southbound - 1-270 S lit to 1-495	2.1
2	1-495 Inner Loop - Virginia State Line to 1-270	4
3	West Spur	4
4	1-495 Outer Loop - MD 187 to Virginia State Line	5.3
5	1-495 Inner Loop. MD 355 to MD 97	4.1
6	1-495 Inner Loop - MD 650 to MD 201	5.1
7	1-270 Spur Northbound - 1-495 to 1-270	2.3
8	MD 100 Westbound - MD 713 to US 1	2.8
9	1-95/1-495 Inner Loop - MD 202 to MD 214	3.7
10	1-695 Outer Loop - US 1 to MD 170	3.4
11	1-695 Inner Loop - US 1 to US 40	4.9
12	I-695 Inner Loop - US 40 to MD 26	5.8
12	11-270 (Local) Northbound - Shady Grove Road to MD 124	5.4
14	1-95 Northbound - MD 216 to MD 100	7.1
15	I-695 Outer Loop MD - 140 to US 40	7.5

“As Maryland strives to enhance its high performance economy, it will be critical that it is able to provide a well-maintained, safe and efficient 21st century network of roads, highways, bridges and transit that can accommodate the mobility demands of a modern society,” TRIP said in the report.