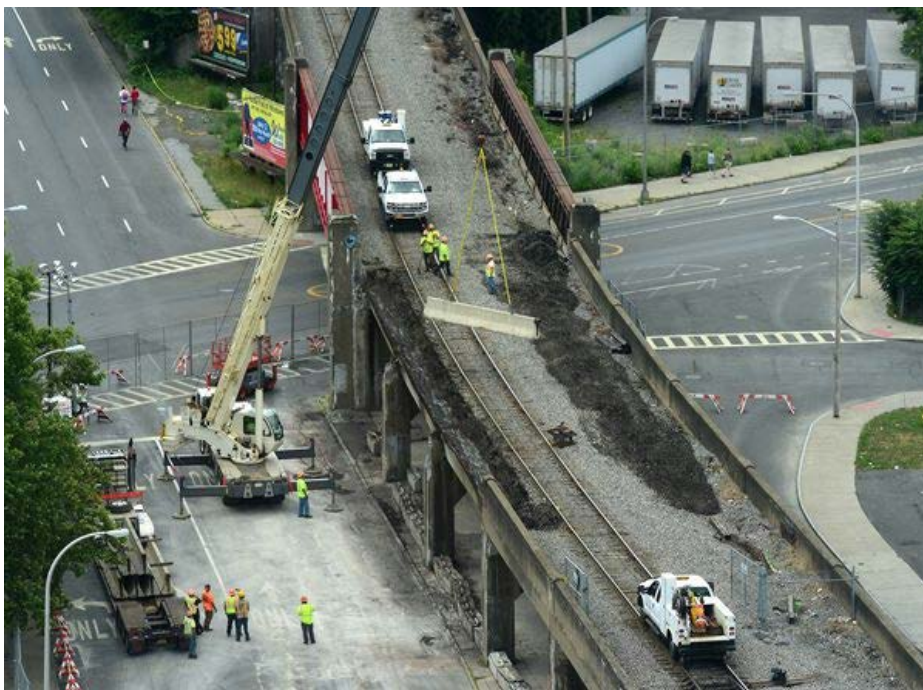


THE POST-STANDARD

1 in 8 bridges in Central New York 'structurally deficient,' according to report



Michael Greenlar | mgreenlar@syr

A crane lifts a barrier to temporarily replace the railroad bridge wall that recently fell near the intersection of South Clinton and West Onondaga streets in Syracuse.

increase in federal, state and local funding for New York's aging infrastructure.

"Without increased and reliable transportation funding, numerous projects to improve and preserve aging bridges in the Syracuse area and statewide will not move forward, hampering New York's ability to efficiently and safely move people and goods," said TRIP Executive Director Will Wilkins.

TRIP compiled a series of reports for cities across New York, as well as a statewide study.

In the greater Syracuse area, about 911,000 vehicles travel on structurally deficient bridges every day, the report said. The most heavily trafficked bridge that's in poor condition is the I-690 bridge over North Townsend Street in downtown Syracuse.

According to the report, it would cost \$3.6 billion to replace all of the structurally deficient bridges in New York.

Read the [full report here](#).

Chris Baker is a public affairs reporter for syracuse.com and The Post-Standard. Contact him via email at cbaker@syracuse.com or follow him on [Twitter](#).

By [Chris Baker | cbaker@syracuse.com](mailto:cbaker@syracuse.com)

SYRACUSE, N.Y. -- One out of every eight Central New York bridges needs significant repairs, according to a new report from a national non profit.

TRIP, a non-profit research organization that studies transportation issues, examined data on 875 bridges in Onondaga, Madison and Oswego Counties and found 101 were rated poor or structurally deficient by the Federal Highway Administration.

Another 528 bridges (60 percent) were rated fair and 246 (28 percent) were rated good.

A bridge is considered structurally deficient if the deck, supports or other major pieces are deteriorating. A bridge in that condition could be closed or its weight rating could be limited if it's not repaired.

TRIP used the report to call for an