

Examples of social media posts surrounding the release of TRIP's 2019 [Louisiana Transportation by the numbers: Meeting the State's need for Safe, Smooth and Efficient Mobility](#)



The image shows a screenshot of a Twitter profile for WWL-TV (@WWLTV) and a tweet. The profile header features a blue banner with the WWL-TV logo (4WWL WUPL54) on the left, a laptop and smartphone displaying the station's website in the center, and the WWLTV.com logo and @WWLTV handle on the right. Below the banner are icons for a menu, notifications, and a 'Following' button. The profile name is 'WWL-TV' with a verified checkmark, and the handle is '@WWLTV'. The bio reads: 'Breaking Stories and information from WWL-TV Channel 4, Eyewitness News, CBS affiliate in New Orleans'. The website link is 'wwltv.com' and it says 'Joined March 2008'. The profile has '1,206 Following' and '200.5K Followers'.

The tweet is from 'WWL-TV' (@WWLTV) posted 16 hours ago. The text of the tweet is: 'Poor New Orleans roads are costing drivers thousands according to new report'. Below the text is a video player showing a close-up of a person's hand on a car wheel. The video description reads: 'Poor New Orleans roads are costing drivers thousand... According to TRIP, driving on deteriorating, congested roads that lack safety features costs Louisiana drivers...'. A link to 'wwltv.com' is provided below the video. At the bottom of the tweet are icons for replies (4), retweets (2), likes (2), and a share icon.



Gerron Jordan ✓

@GerronJordan

AM News Anchor @ NBC33/FOX44 in Baton Rouge • Formerly @fox2now @wafb @kplc7News • @HowardU Grad • @NABJ • Chicago born & raised • Lover of all things Louisiana 🍷

📍 Baton Rouge, LA 🔗 brproud.com 📅 Joined April 2011

4,031 Following 3,303 Followers



Gerron Jordan ✓ @GerronJordan · Oct 8

A new report from @TRIP_Inc shows drivers lose an average of \$2,300 a year because of poor roads conditions in Baton Rouge. They'll detail their findings during a 9AM news conference @wgmbfox44



🗨️ 1 🔄 1 ❤️ 1 📤



Following

The Advocate ✓

@theadvocatebr

The Advocate, a 2019 Pulitzer Prize winner for local reporting, has served Baton Rouge and LA for more than a century. A top source for news, sports, much more.

📍 Baton Rouge, LA theadvocate.com 📅 Joined April 2007

461 Following 94.8K Followers



The Advocate ✓ @theadvocatebr · 10h

Driving on Baton Rouge's crumbling, congested roads costs the average motorist around \$2,300 annually, according to a new study.



Baton Rouge's bad roads take 4-figure chunk out a driver's bank account...
Driving on Baton Rouge's crumbling, congested roads costs the average motorist around \$2,300 annually, according to a new study from a ...
theadvocate.com

🗨️ 3

↻ 5

❤️ 8





LaRadioNetwork

@LaRadioNetwork

Providing Statewide News Coverage in Louisiana. With News Director: Jeff Palermo, Asst. News Director Matt Doyle and anchor/report Kevin Barnhart

📍 Baton Rouge, LA [🔗 louisianaradionetwork.com](http://louisianaradionetwork.com) 📅 Joined March 2013

329 Following 1,175 Followers



LaRadioNetwork @LaRadioNetwork · Oct 9

A national transportation research group finds that Louisiana motorists lose 6.9 billion dollars annually on roads that are rough, congested and lack some safety features.



Poor and mediocre road conditions cost Louisiana dr...
New research shows rough, congested, and unsafe roads are costing Louisiana motorists around \$6.9 ...
[🔗 louisianaradionetwork.com](http://louisianaradionetwork.com)





Following

Curbed New Orleans ✓

@CurbedNOLA

Every aspect of living in New Orleans, for people who care about their city, their streets, and their homes.

📍 New Orleans, LA 🔗 nola.curbed.com 📅 Joined February 2012

519 Following 4,187 Followers



Curbed New Orleans ✓ @CurbedNOLA · 46m



New Orleans' crumbling roads cost drivers \$2,159 per year, study shows
nola.curbed.com/2019/10/8/2090...





Following

Rock Products

@rockproducts

Rock Products is the aggregates industry's leading source for market analysis and technology solutions.

📍 Jacksonville, FL [🌐 rockproducts.com](https://rockproducts.com) 📅 Joined January 2010

463 Following 2,539 Followers

 **Rock Products**
@rockproducts

TRIP: Louisiana Roads in Critical Condition ow.ly/12DO50wFND4 @TRIP_Inc

12:26 PM · Oct 8, 2019 · [Hootsuite Inc.](#)



Following

BRAC

@BRAC_BatonRouge

Baton Rouge Area Chamber (BRAC) – Leading economic development in the nine-parish Capital Region

📍 Baton Rouge, Louisiana brac.org 📅 Joined December 2009

651 Following 9,366 Followers



BRAC @BRAC_BatonRouge · Oct 8

HAPPENING NOW: @TRIP_Inc releases report on Louisiana roads.



Show this thread



Liz Smith @BRACEconCompete · Oct 8

@BRAC_BatonRouge Chairman Randy Cangelosi calling on legislators to address this problem with a new gas tax. Asks, how else can we fully address both maintenance and new capacity projects?



1 1 2



Liz Smith @BRACEconCompete · Oct 8

"Economic growth depends on our willingness to address this issue...we should focus new revenue on projects that have real economic benefit to our state... We hope voters in this upcoming election take infrastructure into account." says @TommyFaucheux



1 1



[ChamberMovesv](#) and 5 others retweeted a Tweet

you were mentioned in I joined @BRAC_BatonRouge & @TRIP_Inc today to shine light on poor hwy/bridge infrastructure in Louisiana. The limited capacity of roads & bridges costs motorists money, while making it harder for people to get to work. It is time for new revenue & a new bridge. #lalege #lagov <https://twitter.com/BRACEconCompete/status/1181574708971618305>

ChamberMoves

Retweeted a Tweet you were mentioned in

I joined @BRAC_BatonRouge & @TRIP_Inc today to shine light on poor hwy/bridge infrastructure in Louisiana. The limited capacity of roads & bridges costs motorists money, while making it harder for people to get to work. It is time for new revenue & a new bridge. #lalege #lagov

<https://twitter.com/BRACEconCompete/status/1181574708971618305>

portation-system-trip-report-says



ChamberMoves Retweeted your Tweet

@TRIP_Inc report says \$503 billion in goods are shipped to and from Louisiana annually. The Value of freight shipped in Louisiana expected to increase 78% by 2045

<http://ow.ly/edN350wFCUD> @BRAC_BatonRouge @GNOinc <https://pic.twitter.com/Y5S4qv7eNw>



Liz Smith

@BRACEconCompete

· Oct 8

Now, @TommyFaucheux from @DowNewsroom LA explaining the impact of traffic congestion on employees and industry. "If our roads and bridges don't allow workers to get from one place to another, then the manufacturing industry suffers."



[ChamberMoves](#)

liked your Tweet Retweeted your Tweet

@TRIP_Inc report says \$503 billion in goods are shipped to and from Louisiana annually. The Value of freight shipped in Louisiana expected to increase 78% by 2045

<http://ow.ly/edN350wFCUD> @BRAC_BatonRouge @GNOinc

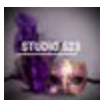
<https://pic.twitter.com/Y5S4qv7eNw>



FasterBetterSafer liked your Tweet

Without adequate funding, Louisiana's surface transportation system will become increasingly deteriorated and congested, hampering economic growth, safety and quality of life

<http://ow.ly/TDap50wF2KF> @TRIP_Inc @BRAC_BatonRouge @GNOinc



studio523 liked your Tweet

New @TRIP_Inc report says New Orleans area drivers waste 58 hours and lose \$1,103 annually sitting in traffic congestion. <http://ow.ly/9xFN50wFOib> @BRAC_BatonRouge @GNOinc

<https://pic.twitter.com/0xR8IYXX8v>