

## Examples of social media posts surrounding the release of TRIP's 2020

[Rural Connections: Challenges and Opportunities in America's Heartland](#)



catch up today!

RADIO.COM

⋮   ✉   🔔   **Following**

**KCBS 106.9 FM/740 AM** ✓  
@KCBSRadio

The Bay Area's only all-news radio station. Local, national and world news - traffic, weather updates every 10 minutes 'on the eights.' Follow [@kcbsamfmtraffic](#)

📍 San Francisco Bay Area   🔗 [kcbsradio.com](#)   📅 Joined September 2008

**4,420** Following   **46.9K** Followers




**KCBS 106.9 FM/740 AM** ✓ @KCBSRadio · 14h

A new report found the coronavirus could have a devastating impact on the California's rural highways and bridges, which are already in pretty bad shape. [@mattbigler740](#) reports.

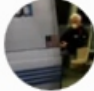


New Report Finds Coronavirus Potentially Devastating for Rural Highwa...  
A new report found the coronavirus could have a devastating impact on the California's rural highways and bridges, which are already in pretty ...  
[kcbsradio.radio.com](#)


**LATEST BAY AREA CORONAVIRUS NEWS**




**New Report Finds Coronavirus Pote...**  
A new report found the coronavirus coul...  
May 12, 2020




**BART Joins Coalition Requesting B...**  
BART is joining a coalition of transit age...  
May 12, 2020



**Vigil Held in SF for Inmates and ICE...**  
A vigil was held on the steps of San Fran...  
May 12, 2020



**Gov. Newsom Loosens Restrictions...**  
California Governor Newsom gave the gr...  
May 12, 2020



**Answering Your Medical Questions ...**  
As we continue to navigate these unpre...

**LATEST**   **LOCAL**   **NATIONAL**

# YOUR NEWS LEADER



ME. ANYWHERE. ANY DEVICE.

...

Follow

**KFYR-TV** ✓

@KFYRTV

Your News, Weather and Sports Leader in western North Dakota.

📍 Bismarck, North Dakota 🔗 [kfyrtv.com](http://kfyrtv.com) 📅 Joined December 2008

159 Following 11K Followers



**KFYR-TV** ✓ @KFYRTV · 15h



According to a report, 11% of rural bridges in the state are considered in poor condition.



More than a tenth of ND bridges are considered poor condition  
A report from the National Transportation Research Nonprofit shows  
North Dakota rural roads are not meeting standards.

🔗 [kfyrtv.com](http://kfyrtv.com)



Follow

**CBS 13 News** ✓

@WGME

CBS 13 News is On Your Side.

📍 Portland, Maine 🔗 [WGME.com](http://WGME.com) 📅 Joined February 2009

7,773 Following 76.2K Followers

↻ CBS 13 News Retweeted



**Jennifer Long** ✓ @JenniferWGME · May 12

This is not hard to believe...



Rural roads in Maine are some of the worst in the nation  
A new report from TRIP, a transportation research nonprofit, shows  
Maine's rural roads and bridges are in poor condition compared with ...

🔗 [wgme.com](http://wgme.com)



# NEWS25



Following

**WXXV 25** ✓

@WXXV25

News 25 is Your Local Choice for news in South Mississippi!

📍 Gulfport, Mississippi 🔗 [wxxv25.com](http://wxxv25.com) 📅 Joined August 2009

473 Following 7,856 Followers



**WXXV 25** ✓ @WXXV25 · May 12

A new report finds Mississippi's rural roads and bridges have significant concerns.



Study shows 24 percent of rural roads in Mississippi a...  
A new report finds Mississippi's rural roads and bridges have significant concerns. This is according t...  
🔗 [wxxv25.com](http://wxxv25.com)



Follow

**KRCG 13** ✓

@KRCG13

Mid-Missouri's News Leader. [#LiveonKRCG13](#)

📍 Columbia/Jefferson City, MO 🔗 [krcgtv.com](#) 📅 Joined February 2009

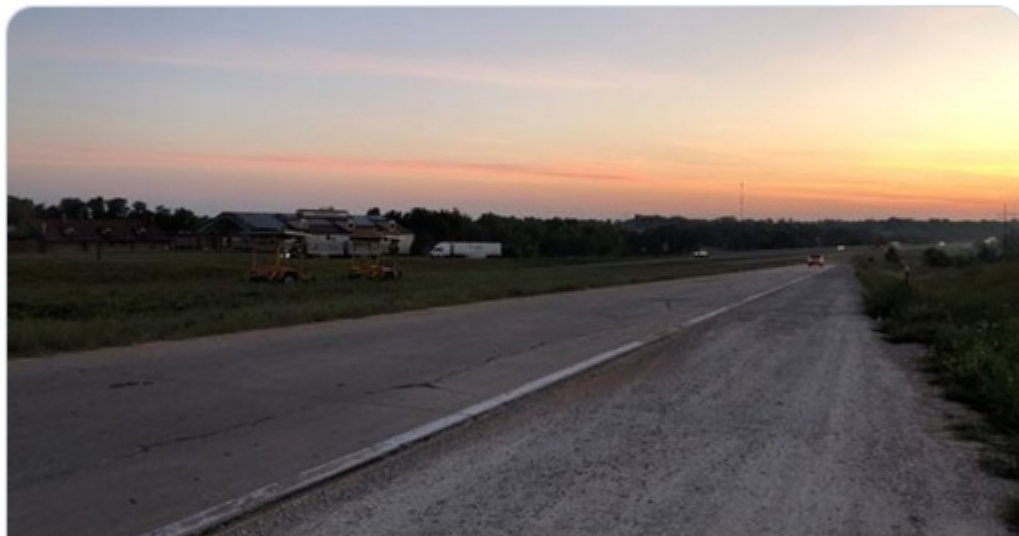
2,531 Following 33.4K Followers



**KRCG 13** ✓ @KRCG13 · May 12



The report found that traffic crashes and fatalities on rural roads are disproportionately high, occurring at a rate more than double that on all other roads.



Missouri 11th in the nation for traffic fatalities on rural roads, report says  
A recently released report ranked Missouri 11th in the nation for traffic fatalities on rural roads. The report found that traffic crashes and fataliti...

🔗 [krcgtv.com](#)



#StillFarming



Follow

**American Farm Bureau** ✓

@FarmBureau

America's largest general farm organization, comprised of and directed by farm and ranch families who engage in all types of food, fuel and fiber production.

📍 Washington, DC 🔗 [fb.org](https://fb.org) 📅 Joined February 2009

1,541 Following 76.6K Followers



**American Farm Bureau** ✓ @FarmBureau · 13h



America's rural transportation system is in need of repairs and modernization to support economic growth and improve traffic safety in the nation's Heartland—according to a recent [@TRIP\\_Inc](#) report.



U.S. Rural Roads and Bridges Have Significant Deficiencies and High Fat...  
Addressing anticipated \$50 billion decrease in state transportation revenues due to COVID-19 seen as vital to funding needed repairs and ...

🔗 [fb.org](https://fb.org)








Following

**Farm Credit System**


@farmcredit
Follows you

Farm Credit supports rural communities and agriculture with reliable, consistent credit and financial services, today and tomorrow.

 All 50 States and Puerto Rico
 [farmcredit.com](https://farmcredit.com)
 Joined July 2008

4,446 Following
13.5K Followers



**Farm Credit System**


@farmcredit

Thanks to [@TRIP\\_Inc](#). This report highlights a major issue [#rural](#) communities face: deteriorating rural roads and bridges. Made worse by reduced revenue as a result of [#COVID19](#). The time to reinvest in our national's rural infrastructure is now. [#RebuildRural](#)


**TRIP**

@TRIP\_Inc · 3h

U.S. rural roads, highways and bridges face a \$211 billion backlog in needed repairs and improvements [@TRIP\\_Inc](#) [ow.ly/b7dP50zDUp2](#) [@farmcredit](#) [@FarmBureau](#) [@AGCofA](#) [@ARTBA](#) [@aemadviser](#) [#RuralRoads](#) [#InfrastructureNow](#) [#rebuildrural](#)

ROADS

HIGHWAYS

BRIDGES

FACE A

**\$211 BILLION**

BACKLOG IN NEEDED  
REPAIRS AND  
IMPROVEMENTS.





**AGC**  
THE CONSTRUCTION  
ASSOCIATION

**AGC of America**  
@AGCofA Follows you

AGC of America serves our nation's construction professionals by promoting the skill, integrity and responsibility of those who build America.

📍 Arlington, VA 🔗 [agc.org](https://agc.org) 📅 Joined June 2009

**4,262** Following **38.1K** Followers



**AGC Legislative**  
@AGCLegislative

AGC on [@TRIP\\_Inc](#) rural road report: Without new federal funding, we will miss this unique opportunity, with traffic at record lows, to repair our rural roads, protect countless construction jobs and restart our stalled economy.



News Release: U.S. Rural Roads & Bridges Have Significant De...  
FOR IMMEDIATE RELEASE Tuesday, May 12, 2020 Contact:  
Rocky Moretti (202) 262-0714 Carolyn Bonifas Kelly (703) ...  
🔗 [tripnet.org](https://tripnet.org)







# AGC

THE CONSTRUCTION ASSOCIATION





Following

## AGC Legislative

@AGCLegislative Follows you

AGC Government Affairs is committed to addressing the legislative priorities facing the commercial construction industry and growing the construction economy.

 Washington, DC
  [agc.org](http://agc.org)
 Joined January 2013

259 Following 1,299 Followers

 AGC of America Retweeted



**TRIP** @TRIP\_Inc · 1h

U.S. rural roads, highways and bridges face a \$211 billion backlog in needed repairs and improvements [@TRIP\\_Inc ow.ly/b7dP50zDUUp2](https://ow.ly/b7dP50zDUUp2) [@farmcredit](#) [@FarmBureau](#) [@AGCofA](#) [@ARTBA](#) [@aemadviser](#) [#RuralRoads](#) [#InfrastructureNow](#) [#rebuildrural](#)



ROADS HIGHWAYS BRIDGES

FACE A  
**\$211 BILLION**  
BACKLOG IN NEEDED  
REPAIRS AND  
IMPROVEMENTS.


 7
  8
 




Following

## ChamberMoves

@ChamberMoves Follows you

We are the transportation Infrastructure team of the U.S. Chamber of Commerce. Ed Mortimer serves as Vice President of Transportation Infrastructure.

📍 Washington, DC 🔗 [uschamber.com/lets-rebuild-a...](https://uschamber.com/lets-rebuild-a...) 📅 Joined February 2016

820 Following 1,554 Followers

📌 Pinned Tweet



**ChamberMoves**

@ChamberMoves



What better time for congress to do their job and enact infrastructure modernization plan?! Let's go! #InfrastructureNow @USChamber @ATMCoalition @realDonaldTrump @EPWGOP @EPWDems @TransportDems @TransportGOP @ARTBA @ReBuildUSANow @AGCLegislative @AEMAdvocacy



**TRIP** @TRIP\_Inc · May 12

As the backbone of America's supply chain, rural roads, highways and bridges are critical during COVID-19 pandemic @TRIP\_Inc [ow.ly/Kc5M50zDM3S](https://ow.ly/Kc5M50zDM3S) @farmcredit @FarmBureau @AGCofA @ARTBA @aemadviser #RuralRoads #InfrastructureNow #rebuildrural

9:27 AM · May 12, 2020 · [Twitter for iPhone](#)

3 Retweets 9 Likes

**Kansas Contractors**  
@KansasRoads Follows you

Official Twitter Account of the Kansas Contractors Association

📍 Topeka, KS 🔗 [savekansasroads.com](https://www.savekansasroads.com) 🕒 Born January 1  
📅 Joined February 2015

551 Following 622 Followers



**Kansas Contractors** @KansasRoads · 1h

Funding is critical to improving safety. Investing in transportation keeps people employed and improves the safety of the system. The recently passed IKE Program will improve the safety of our highway system.

[tripnet.org/reports/kansas...](https://tripnet.org/reports/kansas...)

#ksleg @KDOTHQ @EconLifelinesKS @TRIP\_Inc



News Release: Kansas' Rural Roads Have High Fatalit...  
FOR IMMEDIATE RELEASE Tuesday, May 12, 2020  
Contact: Rocky Moretti (202) 262-0714 Carolyn Bonif...  
🔗 [tripnet.org](https://tripnet.org)



## KAHC News



### →TRIP RELEASES REPORT ON THE STATE OF RURAL ROADS

#### ***Kentucky fatalities rank third highest in the nation***

Washington, D.C. —America's rural transportation system is in need of repairs and modernization to support economic growth and improve traffic safety in the nation's Heartland, but the US faces a \$211 billion backlog in funding for needed repairs and improvements to the rural transportation system. This is according to a new report released today by TRIP, a national transportation research nonprofit. The report, *Rural Connections: Challenges and Opportunities in America's Heartland*, evaluates the safety and condition of the nation's rural roads and bridges and finds that America's rural transportation system is in need of immediate improvements to address deficient roads and bridges, high crash rates, and inadequate connectivity and capacity.

**The most influential people in freight transportation read Transport Topics.**



Following

## Transport Topics

@TransportTopics Follows you

The Newspaper of Trucking and Freight Transportation

[ttnews.com](https://ttnews.com) Joined March 2010

3,359 Following 38.8K Followers



**Transport Topics** @TransportTopics · 14m

.@TRIP\_Inc reports the U.S. faces a \$211 billion funding backlog for needed repairs and improvements to the rural transportation system. #coronavirus by @eleanorannlamb



**Transport Topics**

COVID-19 Will Exacerbate Rural Transportation Funding Needs, TRIP  
Rural transportation needs face a significant funding deficit that will be compounded by the coronavirus pandemic's blow to state revenue ...

[ttnews.com](https://ttnews.com)





[Message](#)[More...](#)



...



Following

**Greg Sitek**  
@diggingfordirt Follows you

Has been a construction magazine editor for over 40 years.

[site-kconstructionzone.com](http://site-kconstructionzone.com)  Joined February 2009

649 Following 3,265 Followers



Greg Sitek • 1st

Vice President Editorial at Associated Construction Publications (ACP)  
5d • 



A N  
Trai  
Res  
Nor

TRIP REPORT: U.S. RURAL ROADS & BRIDGES HAVE  
SIGNIFICANT DEFICIENCIES & HIGH FATALITY RATES  
[site-kconstructionzone.com](http://site-kconstructionzone.com) • 11 min read



**ROCK**  
PRODUCTS



Following

**Rock Products**

@rockproducts

Rock Products is the aggregates industry's leading source for market analysis and technology solutions.

📍 Denver, CO 🔗 [rockproducts.com](https://rockproducts.com) 📅 Joined January 2010

450 Following 2,641 Followers



**Rock Products** @rockproducts · 2m



A new report from @TRIP\_Inc finds that the U.S. faces a \$211 billion backlog for needed repairs and improvements to its rural transportation system. [ow.ly/s7rf50zE0Cw](https://ow.ly/s7rf50zE0Cw) #RebuildRural



Rural Roads Report Details Ominous Conditions  
Rural Roads Report Details Ominous Conditions  
[rockproducts.com](https://rockproducts.com)





## Report: Rural roads, bridges expect to see decreased funding despite \$211B backlog

**FEATURED**

BY LIZ CAREY | MAY 12, 2020

A new report from TRIP, a national transportation research nonprofit in Washington, D.C., estimates that rural roads and bridges face a backlog of improvements, but could see a decrease in funding due to the COVID-19 outbreak. The report, "Rural Connections: Challenges and Opportunities in America's Heartland," looks at the condition and safety of U.S. rural roads and bridges. According to the report, the rural road transportation system faces a \$211 billion backlog in needed improve...

[Read More](#) ▶



**Transportation Today** @TransportToday1 · May 12

Report: Rural roads, bridges expect to see decreased funding despite \$211B backlog



Report: Rural roads, bridges expect to see decreased...

A new report from TRIP, a national transportation research nonprofit in Washington, D.C., estimates tha...

[transportationtodaynews.com](https://transportationtodaynews.com)



[Farm Credit System](#) liked your Tweet

Democrats roll out farm rescue wish list <http://ow.ly/dv7050zF9ak> via @politico @TRIP\_Inc @FarmBureau @farmcredit @AGCofA @ARTBA @aemadviser #RuralRoads #InfrastructureNow #rebuildrural



[Helena Mastrogianis Schwarz](#) and [Accelerator For America](#)

Retweeted a Tweet you were mentioned in

According to @Trip\_Inc, America's rural roads, highways and bridges face a \$211 billion backlog in needed repairs and improvements. These transportation systems are the backbone of our economy and our communities – it is past time for a bold federal investment. #InfrastructureNow



[Whitney Williams](#) and 2 others liked a Tweet you were mentioned in

New @TRIP\_Inc report ranks SC #1 in rural road fatalities based on 2018 data. This is why #RuralRoads safety is a key component of the state's 10-year plan. Progress is being made to make rural roads safer and these projects wouldn't be possible without passage of Act 40 in 2017. <https://pic.twitter.com/2JkvOMprab>



[Sandra Mason, APR](#) and 2 others liked a Tweet you were mentioned in

A new @TRIP\_Inc report shows that 13% of rural roads are in poor condition. As our lawmakers consider #infrastructure investment, we urge them to also consider funding for America's heartland. Read the report:

<https://tripnet.org/reports/national-rural-roads-trip-news-release-2020/> #RuralRoads #InfrastructureNow #rebuildrural



[Stephanie Addison](#) liked 2 Tweets you were mentioned in

Thanks to @TRIP\_Inc. This report highlights a major issue #rural communities face: deteriorating rural roads and bridges. Made worse by reduced revenue as a result of #COVID19. The time to reinvest in our national's rural infrastructure is now. #RebuildRural



[David Ward](#) Retweeted a Tweet you were mentioned in

A new @TRIP\_Inc report shows that 13% of rural roads are in poor condition. As our lawmakers consider #infrastructure investment, we urge them to also consider funding for America's heartland. Read the report:

<https://tripnet.org/reports/national-rural-roads-trip-news-release-2020/> #RuralRoads #InfrastructureNow #rebuildrural



liked a Tweet you were mentioned in

A new study from @TRIP\_Inc examining the condition of America's rural roads and bridges estimates a \$211B backlog in needed improvements/maintenance for these systems. Due to COVID-19, that funding gap is only expected to grow.

<https://transportationtodaynews.com/news/18097-report-finds-rural-roads-bridges-will-see-decreased-funding-despite-211b-backlog/#.XrqdwqLCW9o.twitter>



Build Together @BuildTogether\_

According to [@TRIP\\_Inc](#), America's rural roads, highways and bridges face a \$211 billion backlog in needed repairs and improvements. These transportation systems are the backbone of our economy and our communities – it is past time for a bold federal investment. [#InfrastructureNow](#) Quote Tweet TRIP @TRIP\_Inc · May 12  
 COVID-19 Will Exacerbate Rural Transportation Funding Needs, TRIP Finds <https://shar.es/aHIJni> via @TransportTopics @TRIP\_Inc @FarmBureau @farmcredit @AGCofA @ARTBA @aemadviser #RuralRoads #InfrastructureNow #rebuildrural



[Abigail Wilson](#) liked 2 of your Tweets America's rural roads have significant deficiencies with 13% rated in poor condition and 21% rated mediocre - according to new @TRIP\_Inc report <http://ow.ly/Ltxq50zE9vv> @TRIP\_Inc @farmcredit @FarmBureau @AGCofA @ARTBA @aemadviser #RuralRoads #InfrastructureNow #rebuildrural <https://pic.twitter.com/udetBYdsmv>



[Farm Credit System](#) liked your Tweet New Report Finds Coronavirus Potentially Devastating for Rural Highways and Bridges <http://ow.ly/aFm350zEZIM> via @KCBSNews @TRIP\_Inc @FarmBureau @farmcredit @AGCofA @ARTBA @aemadviser #RuralRoads #InfrastructureNow #rebuildrural



[Sara Glogowski](#) and [Gavin Jackson](#) Retweeted a Tweet you were mentioned in  
 New @TRIP\_Inc report ranks SC #1 in rural road fatalities based on 2018 data. This is why #RuralRoads safety is a key component of the state's 10-year plan. Progress is being made to make rural roads safer and these projects wouldn't be possible without passage of Act 40 in 2017. <https://pic.twitter.com/2JkvOMprab>



[Roger's Construction Feed](#) Retweeted a Tweet you were mentioned in  
 A new report out today from @TRIP\_Inc shows America's rural #transportation system needs repairs and modernization to support economic growth and improve traffic safety #rebuildrural #InfrastructureNow



[Anthony R. Haynes](#) and [Michael Chad LaRue](#) liked your Tweet and Retweeted your Tweet  
 America's rural, non-Interstate roads have a traffic fatality rate more than double that on all other roads @TRIP\_Inc @farmcredit @FarmBureau @AGCofA @ARTBA @aemadviser #RuralRoads #InfrastructureNow #rebuildrural <http://ow.ly/DoZK50zElm1> <https://pic.twitter.com/LA1Lzakeyv>



[Lee Covington](#) Retweeted a Tweet you were mentioned in  
 The U.S. rural #transportation system is in need of immediate improvements to address deficient roads and bridges, high crash rates, and inadequate connectivity and capacity, reports @TRIP\_Inc <https://pic.twitter.com/PMP7ceOLXs>

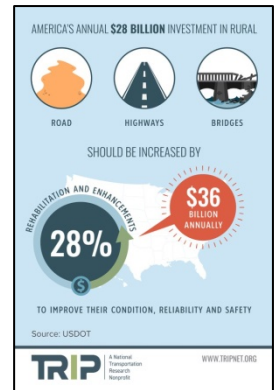


[Gravelman](#) Retweeted 2 of your Tweets As the backbone of America's supply chain, rural roads, highways and bridges are critical during COVID-19 pandemic @TRIP\_Inc <http://ow.ly/Kc5M50zDM3S> @farmcredit @FarmBureau @AGCofA @ARTBA @aemadviser #RuralRoads #InfrastructureNow #rebuildrural [Show all](#)



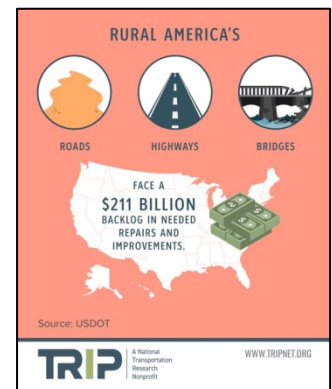
Laura Perrotta @LauraCPerrotta

Rural road safety improvements are vitally important to get toward zero deaths. Quote Tweet TRIP @TRIP\_Inc · 22h US annual \$28 billion investment in rural road/hwy/bridge rehab & enhancements should be increased to \$36B to improve condition/reliability/safety @TRIP\_Inc <http://ow.ly/UsTu50zDZBs> @farmcredit @FarmBureau @AGCofA @ARTBA @aemadviser #RuralRoads #InfrastructureNow #rebuildrural



Graniterock @graniterockco

**What they said!** Quote Tweet TRIP @TRIP\_Inc U.S. rural roads, highways and bridges face a \$211 billion backlog in needed repairs and improvements @TRIP\_Inc <http://ow.ly/b7dP50zDUUp2> @farmcredit @FarmBureau @AGCofA @ARTBA @aemadviser #RuralRoads #InfrastructureNow #rebuildrural

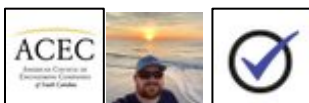


[The Giambolorian](#) liked 2 Tweets you were mentioned in

The US faces a \$211 billion backlog in funding for needed repairs and improvements to the rural #transportation system, reports @TRIP\_Inc <https://pic.twitter.com/gOllk2Mi3n>



liked your Tweet U.S. rural roads, highways and bridges face a \$211 billion backlog in needed repairs and improvements @TRIP\_Inc <http://ow.ly/b7dP50zDUUp2> @farmcredit @FarmBureau @AGCofA @ARTBA @aemadviser #RuralRoads #InfrastructureNow #rebuildrural <https://pic.twitter.com/ctgil5mF5V>



[Adam B. Jones](#) and [ACEC-SC](#) Retweeted a Tweet you were mentioned in

New @TRIP\_Inc report ranks SC #1 in rural road fatalities based on 2018 data. This is why #RuralRoads safety is a key component of the state's 10-year plan. Progress is being made to make rural roads safer and these projects wouldn't be possible without passage of Act 40 in 2017. <https://pic.twitter.com/2JkvOMprab>





[Andrea Eales](#) and 6 others liked your Tweet

US annual \$28 billion investment in rural road/hwy/bridge rehab & enhancements should be increased to \$36B to improve condition/reliability/safety @TRIP\_Inc <http://ow.ly/UsTu50zDZBs> @farmcredit @FarmBureau @AGCofA @ARTBA @aemadviser #RuralRoads #InfrastructureNow #rebuildrural <https://pic.twitter.com/NerTtyWAWo>



[afolino](#) and 2 others Retweeted your Tweet U.S. rural roads, highways and bridges face a \$211 billion backlog in needed repairs and improvements @TRIP\_Inc <http://ow.ly/b7dP50zDUp2> @farmcredit @FarmBureau @AGCofA @ARTBA @aemadviser #RuralRoads #InfrastructureNow #rebuildrural <https://pic.twitter.com/ctgi5mF5V>

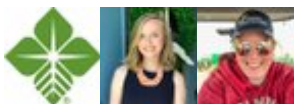


[Brian Morales](#)

liked 2 Tweets you were mentioned in

The U.S. rural #transportation system is in need of immediate improvements to address deficient roads and bridges, high crash rates, and inadequate connectivity and capacity, reports @TRIP\_Inc <https://pic.twitter.com/PMP7ceOLXs>

[Show all](#)



[Sadie Middleton](#) and 2 others liked your Tweet America's rural, non-Interstate roads have a traffic fatality rate more than double that on all other roads @TRIP\_Inc @farmcredit @FarmBureau @AGCofA @ARTBA @aemadviser #RuralRoads #InfrastructureNow #rebuildrural <http://ow.ly/DoZK50zElm1> <https://pic.twitter.com/LA1Lzakeyv>



[KickStartKY](#) and [KACo](#) liked a Tweet you were mentioned in

TRIP Report: Kentucky's Rural Roads Have Third Highest Fatality Rates in the Nation and Road and Bridge Deficiencies. [https://tripnet.org/wp-content/uploads/2020/05/TRIP\\_Rural\\_Roads\\_Report\\_2020.pdf](https://tripnet.org/wp-content/uploads/2020/05/TRIP_Rural_Roads_Report_2020.pdf) @TRIP\_Inc @ARTBA @KickStartKY <http://tripnet.org> <https://pic.twitter.com/QBkK93VRtO>



[Farm Credit System](#) liked 9 of your Tweets U.S. rural bridges have significant deficiencies says @TRIP\_Inc report – eight percent are rated poor/structurally deficient <http://ow.ly/voHa50zEgGW> @farmcredit @FarmBureau @AGCofA @ARTBA @aemadviser #RuralRoads #InfrastructureNow #rebuildrural <https://pic.twitter.com/6NOU9gk8nf> [Show all](#)



[John D. Boyd](#) Retweeted your Tweet

Missouri 11th in the nation for traffic fatalities on rural roads, report says <https://krcgtv.com/news/local/missouri-11th-in-the-nation-for-rural-road-traffic-fatalities-report-says>

@TRIP\_Inc #RuralRoads #InfrastructureNow #rebuildrural



[John D. Boyd](#) and [AGC of America](#) Retweeted your Tweet Rural roads in Maine are some of the worst in the nation <https://wgme.com/news/local/rural-roads-in-maine-are-some-of-the-worst-in-the-nation> @TRIP\_Inc #RuralRoads #InfrastructureNow #rebuildrural



[NECA](#) liked 3 Tweets you were mentioned in The US faces a \$211 billion backlog in funding for needed repairs and improvements to the rural #transportation system, reports @TRIP\_Inc <https://pic.twitter.com/gOIlk2Mi3n>



[Build Together](#) and 2 others Retweeted your Tweet As the backbone of America's supply chain, rural roads, highways and bridges are critical during COVID-19 pandemic @TRIP\_Inc <http://ow.ly/Kc5M50zDM3S> @farmcredit @FarmBureau @AGCofA @ARTBA @aemadviser #RuralRoads #InfrastructureNow #rebuildrural



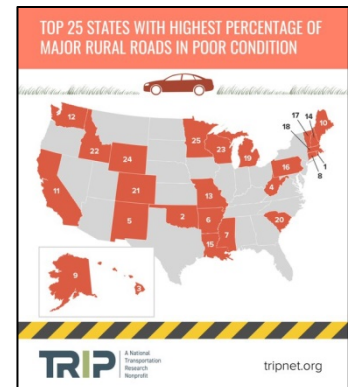
[PCA Government Affairs](#)

Retweeted your Tweet

U.S. rural bridges have significant deficiencies says @TRIP\_Inc report – eight percent are rated poor/structurally deficient <http://ow.ly/voHa50zEgGW> @farmcredit @FarmBureau @AGCofA @ARTBA @aemadviser #RuralRoads #InfrastructureNow #rebuildrural <https://pic.twitter.com/6NOU9gk8nf>



NECA Govt Affairs@NECAGovtAffairs The U.S. rural [#transportation](#) system is in need of immediate improvements to address deficient roads and bridges, high crash rates, and inadequate connectivity and capacity, reports @TRIP\_Inc



Kansas Contractors Funding is critical to improving safety. Investing in transportation keeps people employed and improves the safety of the system. The recently passed IKE Program will improve the safety of our highway system. <https://tripnet.org/reports/kansas-rural-roads-trip-news-release-2020/#ksleg> @KDOTHQ @EconLifelinesKS @TRIP\_Inc



[APWA Gov't. Affairs](#) and 2 others Retweeted your Tweet US annual \$28 billion investment in rural road/hwy/bridge rehab & enhancements should be increased to \$36B to improve condition/reliability/safety @TRIP\_Inc <http://ow.ly/UsTu50zDZBs> @farmcredit @FarmBureau @AGCofA @ARTBA @aemadviser #RuralRoads #InfrastructureNow #rebuildrural <https://pic.twitter.com/NerTtyWAWo>



[Toby Crow](#) Retweeted your Tweet As the backbone of America's supply chain, rural roads, highways and bridges are critical during COVID-19 pandemic @TRIP\_Inc <http://ow.ly/Kc5M50zDM3S> @farmcredit @FarmBureau @AGCofA @ARTBA @aemadviser #RuralRoads #InfrastructureNow #rebuildrural



[Manica Thomas](#) and [Farm Credit System](#) liked your Tweet

America's rural roads have significant deficiencies with 13% rated in poor condition and 21% rated mediocre - according to new @TRIP\_Inc report <http://ow.ly/Ltxq50zE9vv> @TRIP\_Inc @farmcredit @FarmBureau @AGCofA @ARTBA @aemadviser #RuralRoads #InfrastructureNow #rebuildrural <https://pic.twitter.com/udetBYdsmv>



[Rebuild So Cal](#) Retweeted your Tweet America's rural roads have significant deficiencies with 13% rated in poor condition and 21% rated mediocre - according to new @TRIP\_Inc report <http://ow.ly/Ltxq50zE9vv> @TRIP\_Inc @farmcredit @FarmBureau @AGCofA @ARTBA @aemadviser #RuralRoads #InfrastructureNow #rebuildrural <https://pic.twitter.com/udetBYdsmv>



[ReBuildUSA](#) and 5 others liked your Tweet

US annual \$28 billion investment in rural road/hwy/bridge rehab & enhancements should be increased to \$36B to improve condition/reliability/safety @TRIP\_Inc <http://ow.ly/UsTu50zDZBs> @farmcredit @FarmBureau @AGCofA @ARTBA @aemadviser #RuralRoads #InfrastructureNow #rebuildrural <https://pic.twitter.com/NerTtyWAWo>



[KACo](#) and 2 others liked a Tweet you were mentioned in TRIP Report: Kentucky's Rural Roads Have Third Highest Fatality Rates in the Nation and Road and Bridge Deficiencies. [https://tripnet.org/wp-content/uploads/2020/05/TRIP\\_Rural\\_Roads\\_Report\\_2020.pdf](https://tripnet.org/wp-content/uploads/2020/05/TRIP_Rural_Roads_Report_2020.pdf) @TRIP\_Inc @ARTBA @KickStartKY <http://tripnet.org> <https://pic.twitter.com/QBkK93VRtO>



[Sarah Brown Dirkes](#) Retweeted a Tweet you were mentioned in "This report reinforces what many #rural Americans already know - our country's rural infrastructure is crumbling." Read #FarmCredit CEO @ToddVanHoose's full remarks in the @TRIP\_Inc report below. #RebuildRural



[Leonard Toenjes](#) and 9 others retweeted and liked your Tweet U.S. rural roads, highways and bridges face a \$211 billion backlog in needed repairs and improvements @TRIP\_Inc <http://ow.ly/b7dP50zDUup2> @farmcredit @FarmBureau @AGCofA @ARTBA @aemadviser #RuralRoads #InfrastructureNow #rebuildrural <https://pic.twitter.com/ctgil5mF5V>



[Farm Credit System](#) liked your Tweet

Freight mobility and efficiency in rural America is fundamental to rebuilding the nation's economy @TRIP\_Inc <http://ow.ly/laeq50zE71b> @FarmBureau @farmcredit @AGCofA @ARTBA @aemadviser #RuralRoads #InfrastructureNow #rebuildrural



Farm Credit System @farmcredit Thanks to [@TRIP\\_Inc](#) This report highlights a major issue [#rural](#) communities face: deteriorating rural roads and bridges. Made worse by reduced revenue as a result of [#COVID19](#). The time to reinvest in our national's rural infrastructure is now. [#RebuildRural](#)

Quote Tweet TRIP @TRIP\_Inc U.S. rural roads, highways and bridges face a \$211 billion backlog in needed repairs and improvements @TRIP\_Inc <http://ow.ly/b7dP50zDU2> @farmcredit @FarmBureau @AGCofA @ARTBA @aemadviser #RuralRoads #InfrastructureNow #rebuildrural



[SW Washington Central Labor Council](#) and 4 others liked your Tweet

US annual \$28 billion investment in rural road/hwy/bridge rehab & enhancements should be increased to \$36B to improve condition/reliability/safety @TRIP\_Inc <http://ow.ly/UsTu50zDZBs> @farmcredit @FarmBureau @AGCofA @ARTBA @aemadviser #RuralRoads #InfrastructureNow #rebuildrural <https://pic.twitter.com/NerTtyWAWo>



[IBEW Local 10](#) liked a Tweet you were mentioned in

The US faces a \$211 billion backlog in funding for needed repairs and improvements to the rural #transportation system, reports @TRIP\_Inc <https://pic.twitter.com/gOIk2Mi3n>



[Abigail Wilson](#) liked a Tweet you were mentioned in "This report reinforces what many #rural Americans already know - our country's rural infrastructure is crumbling." Read #FarmCredit CEO

@ToddVanHoose's full remarks in the @TRIP\_Inc report below. [#RebuildRural](#)



Farm Credit System @farmcredit "This report reinforces what many [#rural](#) Americans already know - our country's rural infrastructure is crumbling." Read [#FarmCredit](#) CEO [@ToddVanHoose](#)'s full remarks in the [@TRIP\\_Inc](#) report below. [#RebuildRural](#)

Quote Tweet TRIP @TRIP\_Inc · 4h As the backbone of America's supply chain, rural roads, highways and bridges are critical during COVID-19 pandemic @TRIP\_Inc <http://ow.ly/Kc5M50zDM3S> @farmcredit @FarmBureau @AGCofA @ARTBA @aemadviser #RuralRoads #InfrastructureNow #rebuildrural



[AGC of America](#) liked your Tweet As the backbone of America's supply chain, rural roads, highways and bridges are critical during COVID-19 pandemic @TRIP\_Inc <http://ow.ly/Kc5M50zDM3S> @farmcredit @FarmBureau @AGCofA @ARTBA @aemadviser #RuralRoads #InfrastructureNow #rebuildrural



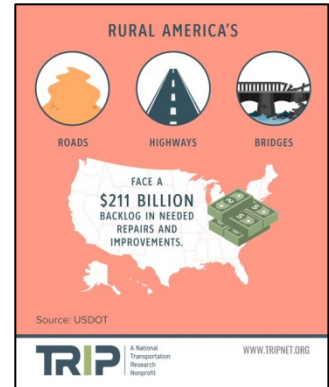
[NECA Govt Affairs @NECAGovtAffairs](#) The US faces a \$211 billion backlog in funding for needed repairs and improvements to the rural [#transportation](#) system, reports [@TRIP\\_Inc](#)



[American Highway Users Alliance](#) and 2 others liked your

Tweet

New report from @TRIP\_Inc that shows condition of America's rural roads & bridges and rural traffic fatalities to be released May 12 @farmcredit @FarmBureau @AGCofA @ARTBA @aemadviser #RuralRoads #InfrastructureNow #rebuildrural <https://pic.twitter.com/CCAR8sY1Wy>  
<https://pic.twitter.com/CCAR8sY1Wy>



[Farm Credit System](#) liked your Tweet Rural Roads Report Details Ominous Conditions [http://rockproducts.com/news-late/19585-rural-roads-report-details-ominous-conditions.html#Xrq5\\_dteMpF.twitter](http://rockproducts.com/news-late/19585-rural-roads-report-details-ominous-conditions.html#Xrq5_dteMpF.twitter) @TRIP\_Inc @FarmBureau @farmcredit @AGCofA @ARTBA @aemadviser #RuralRoads #InfrastructureNow #rebuildrural



[WA Trucking Assn](#) liked a Tweet you were mentioned in @TRIP\_Inc reports the U.S. faces a \$211 billion funding backlog for needed repairs and improvements to the rural transportation system. #coronavirus by @eleanorannlamb [https://ttnews.com/articles/covid-19-will-exacerbate-rural-transportation-funding-needs-trip-finds?utm\\_source=twitter&utm\\_medium=social&utm\\_campaign=News-Story-May-2020](https://ttnews.com/articles/covid-19-will-exacerbate-rural-transportation-funding-needs-trip-finds?utm_source=twitter&utm_medium=social&utm_campaign=News-Story-May-2020)



[Arizona League](#) liked 2 of your Tweets As the backbone of America's supply chain, rural roads, highways and bridges are critical during COVID-19 pandemic @TRIP\_Inc <http://ow.ly/Kc5M50zDM3S> @farmcredit @FarmBureau @AGCofA @ARTBA @aemadviser #RuralRoads #InfrastructureNow #rebuildrural



[ChamberMoves @ChamberMoves](#) What better time for congress to do their job and enact infrastructure modernization plan?! Let's go! [#InfrastructureNow @USChamber @ATMCoalition @realDonaldTrump @EPWGOP @EPWDems @TransportDems @TransportGOP @ARTBA @ReBuildUSANow @AGCLegislative @AEMAAdvocacy](#)

Quote Tweet TRIP @TRIP\_Inc As the backbone of America's supply chain, rural roads, highways and bridges are critical during COVID-19 pandemic @TRIP\_Inc <http://ow.ly/Kc5M50zDM3S> @farmcredit @FarmBureau @AGCofA @ARTBA @aemadviser #RuralRoads #InfrastructureNow #rebuildrural

