

Missouri Transportation by the Numbers: Meeting the State's Need for Safe, Smooth and Efficient Mobility

Broadcast and Social Media Coverage – December 2020

December 3, 2020

KMOV-STL (CBS), St. Louis, MO - Great Day St. Louis
KMOV-STL (CBS), St. Louis, MO - News 4 at 6pm
KMOV-STL (CBS), St. Louis, MO - News 4 This Morning at 6am
KCTV-KC (CBS), Kansas City, MO - KCTV5 News at 6
KMOV-STL (CBS), St. Louis, MO - News 4 This Morning at 5am
KSMO, Kansas City, MO - KCTV5 News at 7:30pm

December 5, 2020

KCTV-KC (CBS), Kansas City, MO - KCTV5 News This Morning
KTRS-AM (Radio), St. Louis, MO

December 8, 2020

WSIL (ABC), Paducah, KY - News 3 News at 6

December 9, 2020

WSIL (ABC), Paducah, KY - News 3 News This Morning
WSIL (ABC), Paducah, KY - News 3 News This Morning



St. Louis Post-Dispatch ✓
@stltoday
St. Louis Post-Dispatch news, sports, busin
@Weatherbird is the Twitter ambassador
St. Louis, Mo. stltoday.com Jo
95 Following 260.9K Followers

St. Louis Post-Dispatch ✓ @stltoday · Dec 4
Voters previously rejected attempts to raise more money for roads and bridges in 2014 and 2018.



Will third time be the charm? Missouri lawmakers may ask voters to rais...
Voters rejected attempts to raise more money for roads and bridges in 2014 and 2018
stltoday.com



5 KCTV 5 NEWS WEEKNIGHTS
KCTV5 NEWS AT 10PM

Following

KCTV5 News ✓
@KCTV5

KCTV5 News Stands for You. We dig deeper, uncover the truth and tell your stories.

📍 Kansas City, Mo. 🔗 kctv5.com/live/nowapp/ 📅 Joined May 2008

871 Following **173.9K** Followers

5 **KCTV5 News** ✓ @KCTV5 · Dec 3

Deteriorating roads and bridges cost Missouri motorists \$8 billion



PAYING THE PRICE FOR POOR ROADS
KANSAS CITY, MO

6:07 38° KCTV 5 NEWS
KCTV5 Kansas City

HEALTHCARE IS ABOUT MEDICARE? CALL (844) 559-0005 NOW FOR OUR MEDICARE PHONE BANK SPONS

Deteriorating roads and bridges cost Missouri motorists \$8 billion dollars
Drivers in the Kansas City metro are losing \$1,873 dollars annually because of the deterioration, congestion, and lack of desirable safety ...
🔗 kctv5.com

NEWS4

WATCHING OUT FOR YOU



Following

KMOV ✓

@KMOV

Bringing you the latest St. Louis news, weather, traffic and sports on your computer or mobile device. For more download the KMOV mobile app.

📍 St. Louis, MO 🔗 lnk.bio/nyH7 📅 Joined April 2009

511 Following 130.3K Followers



KMOV ✓ @KMOV · Dec 3

...

Average driver in St. Louis loses nearly \$2K per year driving on Missouri roads

ST. LOUIS ROAD CONDITIONS

ACCORDING TO "TRIP"

- TRANSPORTATION RESEARCH
- \$1,917 LOST PER YEAR
- \$825M IN NEEDS



KMOV

Average driver in St. Louis loses nearly \$2K per year driving on Missouri ...

Due to roads in poor condition, the average driver in the St. Louis area loses nearly two thousand dollars per year.

🔗 kmov.com



WSIL News ✓
@WSILNews

News 3 WSIL serves viewers in southern Illinois, southeast Missouri and western Kentucky.

📍 Carterville, IL 🔗 wsiltv.com 📅 Joined February 2009

236 Following 34.4K Followers

Buttons: ⋮ 🔔 Following



WSIL News ✓ @WSILNews · Dec 8 ⋮

The state's 17-cent gas tax would increase by two-cents in 2022, and raise every two years until 2027.



Proposed bill would gradually increase Missouri fuel tax beginning 2022
A proposed bill in the missouri senate aims to increase the nation's second-lowest gas tax to help repair roads and bridges.

🔗 wsiltv.com



A photograph of the KOLR 10 News building, featuring large signs for KOLR 10, KOZL Z 10, and FOX OZARKS. The building is white with a dark roof and is surrounded by greenery.



A circular logo for KOLR 10 News, featuring the text "KOLR 10 NEWS" and "OZARKS FIRST" in white on a blue background.

⋮ 🔔 Following

KOLR10 KOZL ✓
@kolr10kozl

This is the official Twitter feed of KOLR10 and KOZL news.

📍 Springfield, MO 🔗 ozarksfirst.com 📅 Joined January 2009

1,242 Following 20K Followers

↻ KOLR10 KOZL Retweeted



Frances Lin ✓ @FrancesLinTV · 10h

⋮

A nonprofit research organization @TRIP_Inc found the average driver in Springfield is spending almost \$1,600 dollars every year for driving on bad roads. And the average motorist spends an additional 34-hours every year stuck in traffic.





Following

Jefferson City News Tribune

@NewsTribune Follows you

Mid-Missouri news and tweets from the Jefferson City News Tribune newspaper and NewsTribune.com

📍 Jefferson City, MO 🔗 newstribune.com 📅 Joined April 2009

1,495 Following 10.3K Followers



Jefferson City News Tribune @NewsTribune · Dec 4

...

Report: Mid-Missouri drivers each lose \$1,500+ a year due to bad roads, [@pslifeisabeauty](#) reports. #JCMO #MidMo



Report: Mid-Missouri drivers each lose \$1,500+ a year due to bad roads
Missouri Department of Transportation leaders said two reports released by nonprofits paint a picture of the state's roads and bridges that show ...
newstribune.com



...

Follow

Missouri Chamber

@MissouriChamber

The latest political, educational and other activities of Missouri's largest business association and 2019 State Chamber of the Year.

📍 Jefferson City, Missouri 🔗 mochamber.com 📅 Joined June 2009

695 Following 7,920 Followers



Missouri Chamber @MissouriChamber · 30m

...

Drivers lose \$8 billion every year on Missouri's roadways due to rough roads, congestion & lack of some safety features, according to @TRIP_Inc. We are leading the charge to address this issue in the 2021 #moleg session.



New report finds Missourians lose \$8B on rough & congested roadways... The Missouri Chamber is leading the charge to address this issue in the upcoming legislative session.

🔗 mochamber.com



AGCMO
MISSOURI CHAPTER
THE CONSTRUCTION ASSOCIATION

Jefferson City
1221 Jefferson Street
Jefferson City, MO 65109
P: 573.636.3188 F: 573.634.3510

St. Louis
6330 Knox Industrial Dr., Ste. 200
St. Louis, MO 63139
P: 314.781.2356 F: 314.781.2874



844.60.MOAGC

...

Follow

AGC of Missouri

@AGCofMO

The AGC of Missouri is the voice for Missouri construction. Our members benefit from enhanced training, networking and business services.

agcmo.org Joined March 2011

252 Following 1,413 Followers



AGC of Missouri @AGCofMO · 3h

...

Last week, [@TRIP_Inc](#) released its latest report "Missouri Transportation by the Numbers." They report the state of Missouri roads and how that impacts Missouri motorists. Read more on their findings here. agcstl.informz.net/AGCSTL/data/im...





1950
2020

HEAVY
CONSTRUCTORS
ASSOCIATION
OF GREATER
KANSAS CITY
MAKING IT BETTER

CELEBRATING
70
YEARS
1950
2020

...

🔔

Following

KCHeavies
@KCHeavies

Constructors Advocating for Better, Safer Infrastructure

📅 Joined February 2019

312 Following **175** Followers

KCHeavies @KCHeavies · Dec 7

Deteriorating roads and bridges cost Missouri motorists \$8 billion [kctv5.com/news/local_new...](https://www.kctv5.com/news/local_new...) via [@KCTV5](#)



Deteriorating roads and bridges cost Missouri motorists \$8 billion
Drivers in the Kansas City metro are losing \$1,873 dollars annually because of the deterioration, congestion, and lack of desirable safety ...
[kctv5.com](https://www.kctv5.com)

the most influential people in freight
transportation read Transport Topics



Following

Transport Topics

@TransportTopics Follows you

The Newspaper of Trucking and Freight Transportation

ttnews.com Joined March 2010

3,338 Following 39.7K Followers



Transport Topics @TransportTopics · Dec 7

...

"It's going to be tough either way. But I think it's necessary," State Senate President Dave Schatz said Dec. 4. "Building and maintaining our infrastructure is one of the core functions of government."



Transport Topics

Missouri Lawmakers May Ask Voters to Raise Gas Tax in 2021

JEFFERSON CITY, Mo. — Two years after Missouri voters decisively rejected a proposal to raise Missouri's gasoline tax, the leader of the ...

ttnews.com



Following

Greg Sitek

@diggingfordirt Follows you

Has been a construction magazine editor for over 40 years.

site-kconstructionzone.com  Joined February 2009

643 Following 3,254 Followers



Greg Sitek @diggingfordirt · Dec 4

...

lnkd.in/gS9tHzn lnkd.in/gM2iACc



Greg Sitek on LinkedIn: TRIP Reports: MISSOURI MOT...
TRIP Reports: MISSOURI MOTORISTS LOSE \$8 BILLION
PER YEAR DRIVING ON ROADS THAT ARE ROUGH, ...
[linkedin.com](https://www.linkedin.com)





...

Following

Rock Products

@rockproducts Follows you

Rock Products is the aggregates industry's leading source for market analysis and technology solutions.

Denver, CO

rockproducts.com

Joined January 2010

505 Following 2,700 Followers



Rock Products @rockproducts · Dec 3

...

Roads and bridges that are deteriorated, congested or lack some desirable safety features cost Missouri motorists a total of \$8 billion statewide annually, according to the latest @TRIP_Inc report.

Read more: ow.ly/F1wZ50CC291
[#transportation](#) [#infrastructure](#)





[Todd LaTorella, P.E.](#) liked your Tweet

Proposed bill would gradually increase Missouri fuel tax beginning 2022 <https://wsilvtv.com/2020/12/08/pro>



[David M. Howard](#) liked your Tweet

Proposed bill would gradually increase Missouri fuel tax beginning 2022 <https://wsilvtv.com/2020/12/08/proposed-bill-would-gradually-increase-missouri-fuel-tax-beginning-2022/#.X9DbWrmDTKY.twitter>



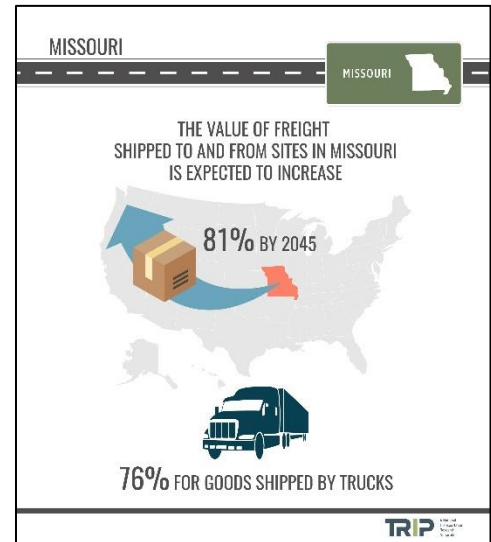
Leonard Toenjes Retweeted your Tweet

The value of freight shipped to and from sites in Missouri is expected to increase 81% by 2045 and 76% for goods shipped by trucks <http://ow.ly/zj4750CBS8z> <https://pic.twitter.com/mva3mavFoE>



Joanna Anderson liked a Tweet you were mentioned in

Drivers lose \$8 billion every year on Missouri's roadways due to rough roads, congestion & lack of some safety features, according to @TRIP_Inc. We are leading the charge to address this issue in the 2021 #moleg session. <http://bit.ly/2JolTKh>



Tom Dempsey Retweeted a Tweet you were mentioned in

Drivers lose \$8 billion every year on Missouri's roadways due to rough roads, congestion & lack of some safety features, according to @TRIP_Inc. We are leading the charge to address this issue in the 2021 #moleg session. <http://bit.ly/2JolTKh>

New report finds Missourians lose \$8B on rough & congested roadways yearly, highlights need for... The Missouri Chamber is leading the charge to address this issue in the upcoming legislative session. mochamber.com



Greg Dean liked your Tweet The value of freight shipped to and from sites in Missouri is expected to increase 81% by 2045 and 76% for goods shipped by trucks <http://ow.ly/zj4750CBS8z> <https://pic.twitter.com/mva3mavFoE>



Pete Grass liked your Tweet

The efficiency of Missouri's transportation system is critical to the state's economy. @TRIP_Inc report says \$469 billion in goods are shipped to and from sites in Missouri each year, 71% by truck #MOInfrastructure <http://ow.ly/cMaG50CBJh2> <https://pic.twitter.com/CxdSfpqRTG>

