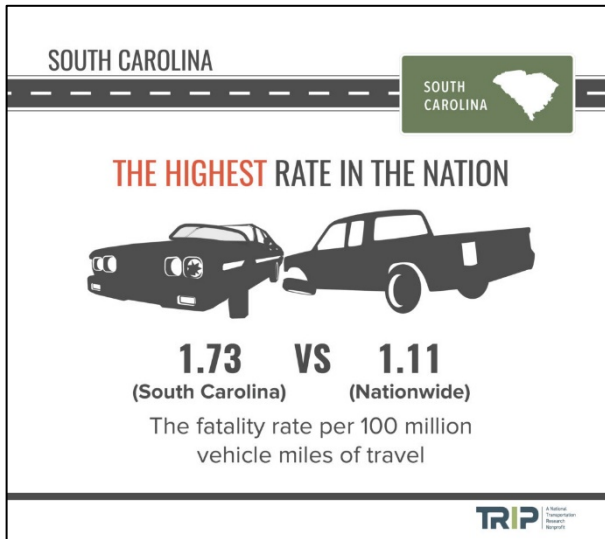


South Carolina Road & Bridge Conditions, Congestion, Safety, and Transportation Funding Needs Examined in New Statewide Report



ACP Staff - September 22, 2021
CHARLESTON, SC — The increased transportation funding provided by the South Carolina legislature's passage of the 2017 Roads Bill (Act 40) has allowed South Carolina to move forward with numerous projects to improve safety and accelerate road and bridge repairs. But the state still faces challenges maintaining its aging system and reliably accommodating growing passenger and freight traffic to serve the needs of the state's growing economy, according to a new report released today by **TRIP**, a Washington, D.C., based national transportation research nonprofit. The TRIP report, *"Moving South Carolina Forward: Providing a Modern, Sustainable Transportation System in the Palmetto State,"* examines the condition, use, safety, and efficiency of South Carolina's surface transportation system, the impact of Act 40, the importance of reauthorization of the federal surface transportation program and the challenges South Carolina faces to accommodate future transportation growth and sustain adequate funding.

"Act 40 has been a game-changer for our state, and every county is benefitting from this investment. Since 2017, considerable progress has been made to improve our state-owned roads. South Carolina is in the midst of tackling a monumental task, and unfortunately, we cannot press pause while we play catch-up on these long-overdue repairs. While current funding levels will help get us to a state of good repair, South Carolina is unprepared to financially deal with the immediate demands associated with population growth and continued economic development," said **Jennifer Patterson**, Executive Director, **SC Alliance to Fix Our Roads**.

With South Carolina's population expected to increase to approximately 6.4 million people by 2040, and vehicle travel growing at the fifth highest rate in the nation from 2014 to 2019,

the TRIP report finds that congestion is worsening, costing South Carolina drivers a total of \$2.1 billion each year in the form of lost time and wasted fuel — as much as of \$1,165 per driver in some urban areas. South Carolina drivers lose as many as 56 hours and waste up to 22 gallons of fuel annually as a result of congestion. A full list of the most congested Interstate segments in the state is included in the report. Due to the COVID-19 pandemic, vehicle travel in South Carolina dropped by as much as 37 percent in April 2020 (as compared to vehicle travel during the same month the previous year) but rebounded to four percent above June 2019 volume in June 2021.

The efficiency and condition of South Carolina's transportation system, particularly its highways, is critical to the health of the state's economy. Annually, 465 tons of freight are shipped to, from, or through South Carolina, an amount that is anticipated to grow by 65 percent by 2040. Accommodating the significant increase expected in the movement of truck freight in South Carolina will be further challenged by the significant number of freight routes in the state that are constrained because they have inadequate load carrying capacity to accommodate large trucks. The TRIP report includes a list of the worst highway freight bottlenecks in South Carolina. Regions with congested or poorly maintained roads may see businesses relocate to areas with a smoother, more efficient, and more modern transportation system.

"Interstate 26 is the state's economic lifeline and truly the most SC-centric Interstate corridor in the state. It has enabled the development and growth of our international, domestic, and tourism sectors like no other route. But when other modes fail, or I-26 bogs down, everything and everybody do too. To remain competitive, I-26, like all of our public infrastructure, must be improved, expanded, and modernized. The state and federal governments have dedicated funding for deepening South Carolina's shipping highway — the Charleston Harbor — they can do the same for I-26," said **Rick Todd**, President & CEO, **SC Trucking Association**.

Since 2018, SCDOT has been able to start approximately 4,000 miles of paving projects statewide, partly due to the additional funding provided by Act 40. According to the TRIP report, 18 percent of South Carolina's major locally and state-maintained roads are in poor condition and 25 percent are in mediocre condition. Eighteen percent of major roads in the state are in fair condition and the remaining 39 percent are in good condition.

Eight percent of South Carolina's locally and state-maintained bridges are rated

poor/structurally deficient. A bridge is deemed poor/structurally deficient if there is significant deterioration of the bridge deck, supports, or other major components. Bridges that are poor/structurally deficient may be posted for lower weight limits or closed if their condition warrants such action. Since 2018, SCDOT has begun repairs on 211 of the 465 state-maintained bridges that were in poor condition or restricted to carrying lighter weight vehicles and prioritized by SCDOT for repair. Based on current funding, SCDOT anticipates that the number of state-maintained bridges that are either in poor condition or restricted to carrying lighter weight vehicles will increase by 81 percent by 2040, from 548 to 994.

"Noticeable progress has been made since passage of Act 40 to enhance safety and address road repairs. Agriculture and forestry businesses are dependent upon the state's rural transportation network to connect these agribusinesses to their markets and ultimately the consumer. Bridges are key connectors for our supply chain, and additional investments at the federal and state level are necessary to ensure that our bridges receive necessary upgrades and repairs," said **Ronnie Summers**, CEO, Palmetto Agribusiness Council.

Traffic crashes in South Carolina claimed the lives of 5,018 people from 2015 to 2019. South Carolina's overall traffic fatality rate of 1.73 fatalities per 100 million vehicle miles of travel in 2019 is the highest in the U.S. The fatality rate on South Carolina's non-Interstate rural roads in 2019 was also the highest rate in the country and approximately three-and-a-half times higher than all other roads in the state (3.46 per 100 million vehicle miles of travel vs. 0.98). The **South Carolina Department of Transportation** has initiated a rural roads safety program targeting 1,957 miles of rural roads, which represents approximately five percent of the state's rural roads, but accounts for approximately 30 percent of the state's rural fatal and serious traffic crashes. Since passage of Act 40, safety improvements have been initiated on 635 miles of the 1,000 miles of rural roads to be addressed under the state's current 10-year plan. These improvements include the addition of rumble strips, guardrails, raised pavement markers, paved shoulders, and wider clear zones.

"While the 2017 investment has provided a significant boost to the state's ability to address repairs and improvements, South Carolina will need to look for opportunities to increase transportation investment from all levels of government — federal, state, and local," said **Dave Kearby**, TRIP's Executive Director. "A safe, reliable, and well-maintained transportation system that offers improved mobility and accessibility to meet the needs of South Carolina residents, businesses, and tourists alike, is critical to moving South Carolina forward."