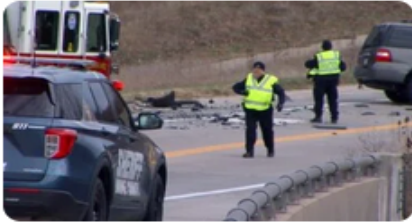


TRANSPORTATION



Deadly crashes in Missouri increase by 31% since 2013 UPDATED

Last updated today at 9:42 AM

July 2, 2024 11:53 AM [Allison Weaver](#)

The National Transportation Research Group reports that crashes resulting in deaths have increased by 31% in the past decade, despite a decline since the height of the COVID-19 pandemic.

[Continue Reading](#)

[Transportation](#)

Deadly crashes in Missouri increase by 31% since 2013



KMIZ
FILE - Police work at the scene of a deadly crash on East Broadway in Columbia on Friday, Dec. 2, 2022.

By [Allison Weaver](#)

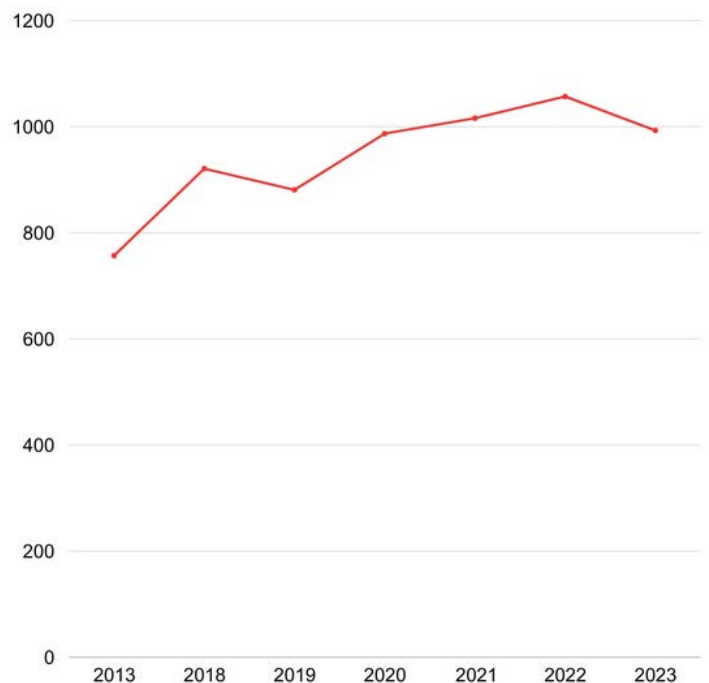
Updated July 3, 2024 | Published July 2, 2024

COLUMBIA, Mo. (KMIZ)

The National Transportation Research Group reports that crashes resulting in deaths have increased by 31% in the past decade, despite a decline since the height of the COVID-19 pandemic.

While [reports of traffic deaths have decreased by 2% from 2021](#), overall, deadly crashes have seen an increase.

The COVID-19 pandemic had an effect on this report, too. In 2021, once restrictions began to loosen and the road became busier, deadly crashes increased too. Crashes fell again in 2023, though.



Source: [TRIP Addressing America's Safety Crisis: Examining the Causes of Increasing U.S. Traffic Fatalities and Identifying Solutions to Improve Traffic Safety Appendix](#)

Since Jan. 1, Missouri State Highway Patrol Troop F has [reported](#) 18 deadly car crashes in its region (Audrain, Boone, Callaway, Camden, Cole, Cooper, Gasconade, Howard, Miller, Moniteau, Montgomery, Morgan and Osage counties).

Of these 18 crashes, around 61% of those involved were not wearing a seatbelt.

Check back for updates to this developing story.